



# GRAMMAR PARK GARDENS

The *best* of family living...

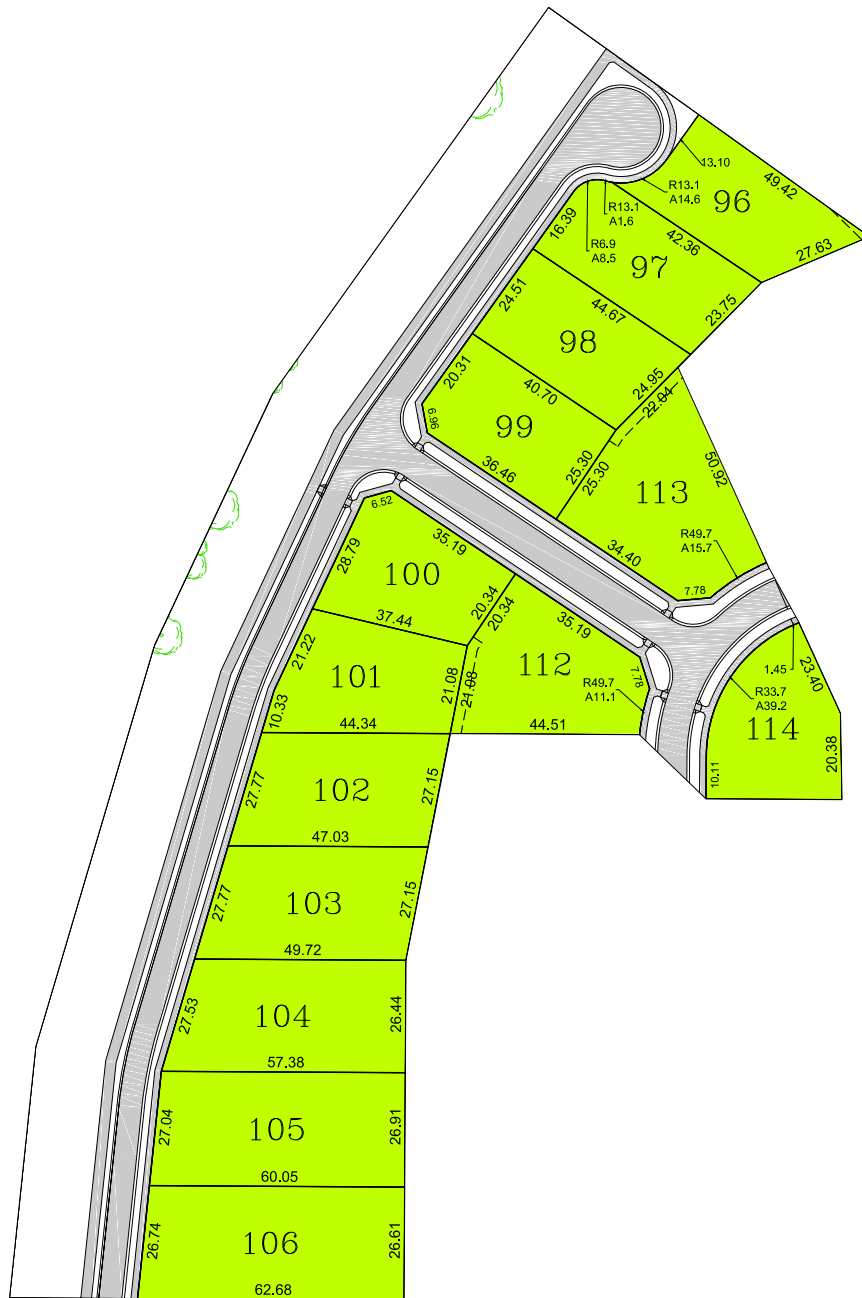
# STAGE 5 NOW SELLING

## Shepparton's premier new estate!

Containing 14 blocks ranging in size from 1016m<sup>2</sup> to 1633m<sup>2</sup>, the fifth stage features the highest energy rating potential.



LOT TABLE	
LOT	AREA
96	1038m <sup>2</sup>
97	1075m <sup>2</sup>
98	1046m <sup>2</sup>
99	1027m <sup>2</sup>
100	1016m <sup>2</sup>
101	1058m <sup>2</sup>
102	1219m <sup>2</sup>
103	1290m <sup>2</sup>
104	1416m <sup>2</sup>
105	1580m <sup>2</sup>
106	1633m <sup>2</sup>
112	1208m <sup>2</sup>
113	1462m <sup>2</sup>
114	1024m <sup>2</sup>



For further information visit:

## [grammarparkgardens.com.au](http://grammarparkgardens.com.au)

Selling agents:

**YOUNGS & CO**  
REAL ESTATE

123 Wyndham St, Shepparton  
Ph. 03 5820 8777  
Glenn Young. 0438 579 993

**KEVIN HICKS**  
REAL ESTATE

228-232 Wyndham St, Shepparton  
Ph. 03 5821 8388  
Terry Shiels. 0448 573 820  
Kevin Hicks. 0428 271 270